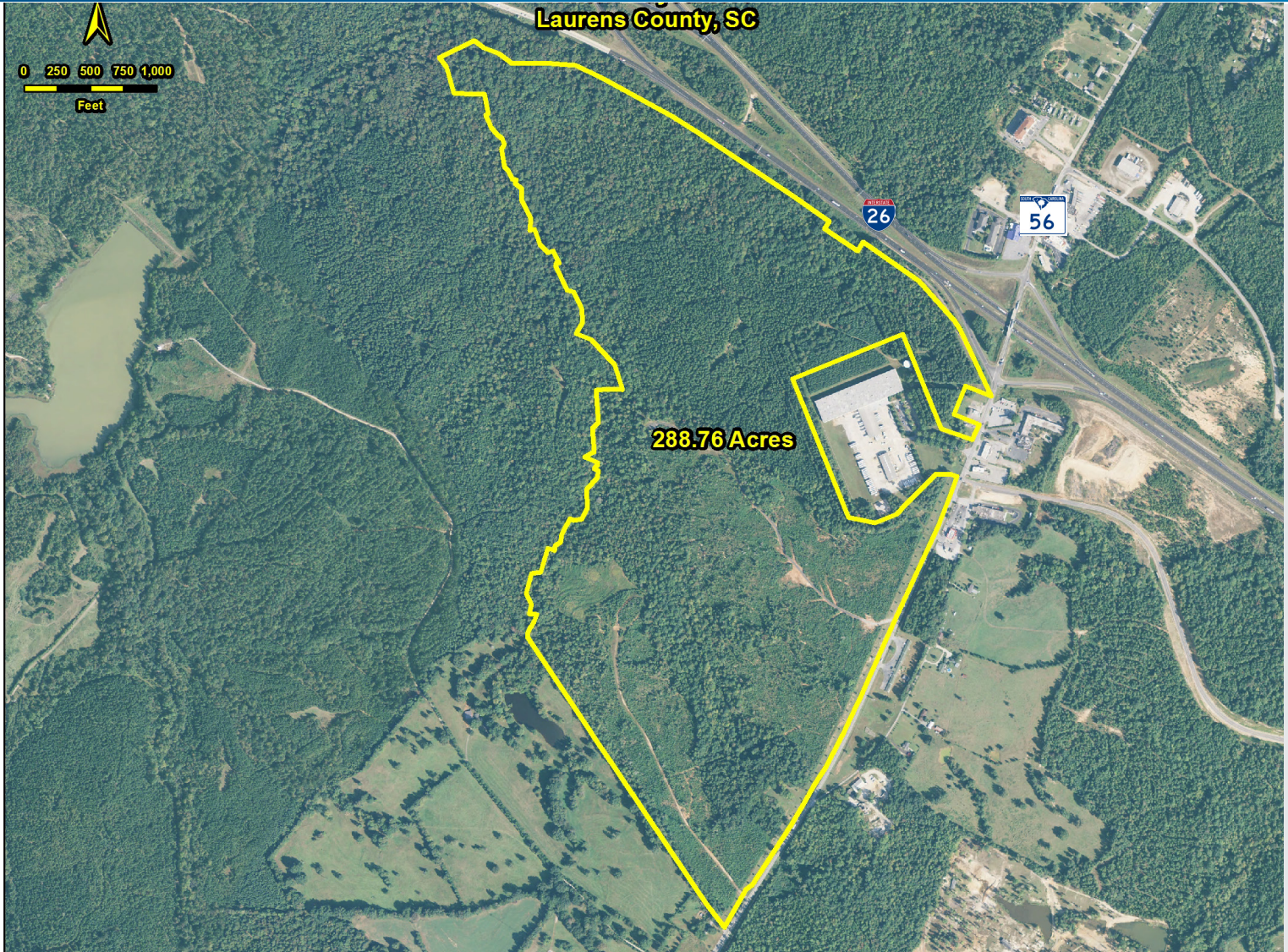


FOR SALE OR BUILD TO SUIT >

Clinton - Sycamore Site

HIGHWAY 56 AT I-26, CLINTON, SC 29325



Property Highlights:

- Land for Sale, Build to Suit, or Joint Venture Equity
- 288.76± Acres
- Located adjacent to I-26
- Tax Map #s 6-35-00-00-019 & 6-35-00-00-026
- Able to accommodate a 1,000,000 SF cross docked facility
- Interstate visibility

CONTACT BROKER FOR PRICING INFORMATION

GARRETT SCOTT
DIR 864 527 5453
MAIN 864 297 4950
garrett.scott@colliers.com

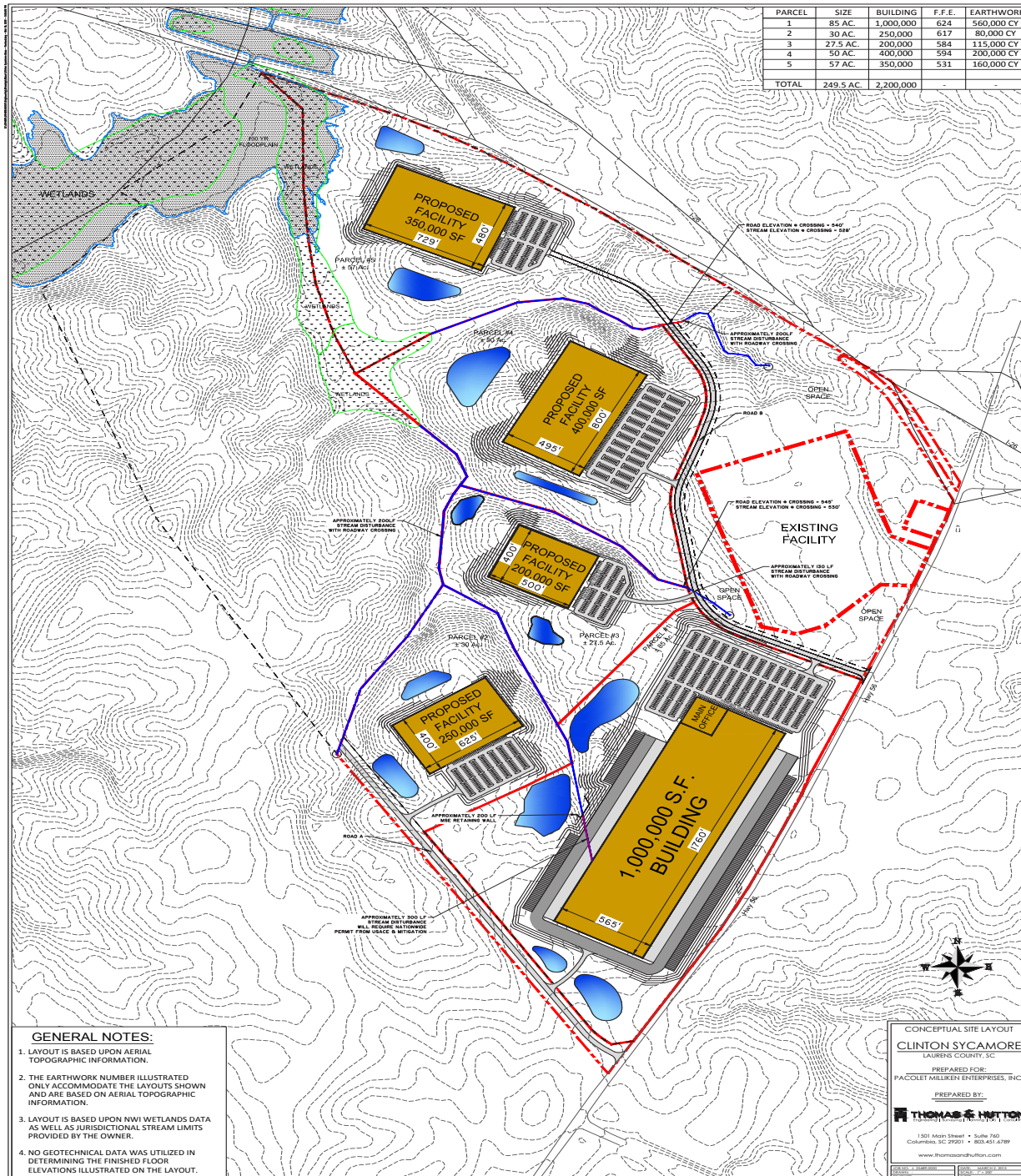
BROCKTON HALL
DIR 864 527 5441
MAIN 864 297 4950
brockton.hall@colliers.com

COLLIERS INTERNATIONAL
55 E. Camperdown Way, Suite 200
Greenville, South Carolina 29601
www.colliers.com/southcarolina

FOR SALE OR BUILD TO SUIT >

Clinton - Sycamore Site

HIGHWAY 56 AT I-26, CLINTON, SC 29325



GARRETT SCOTT
DIR 864 527 5453
MAIN 864 297 4950
garrett.scott@colliers.com

BROCKTON HALL
DIR 864 527 5441
MAIN 864 297 4950
brockton.hall@colliers.com

COLLIERS INTERNATIONAL
55 E. Camperdown Way, Suite 200
Greenville, South Carolina 29601
www.colliers.com/southcarolina